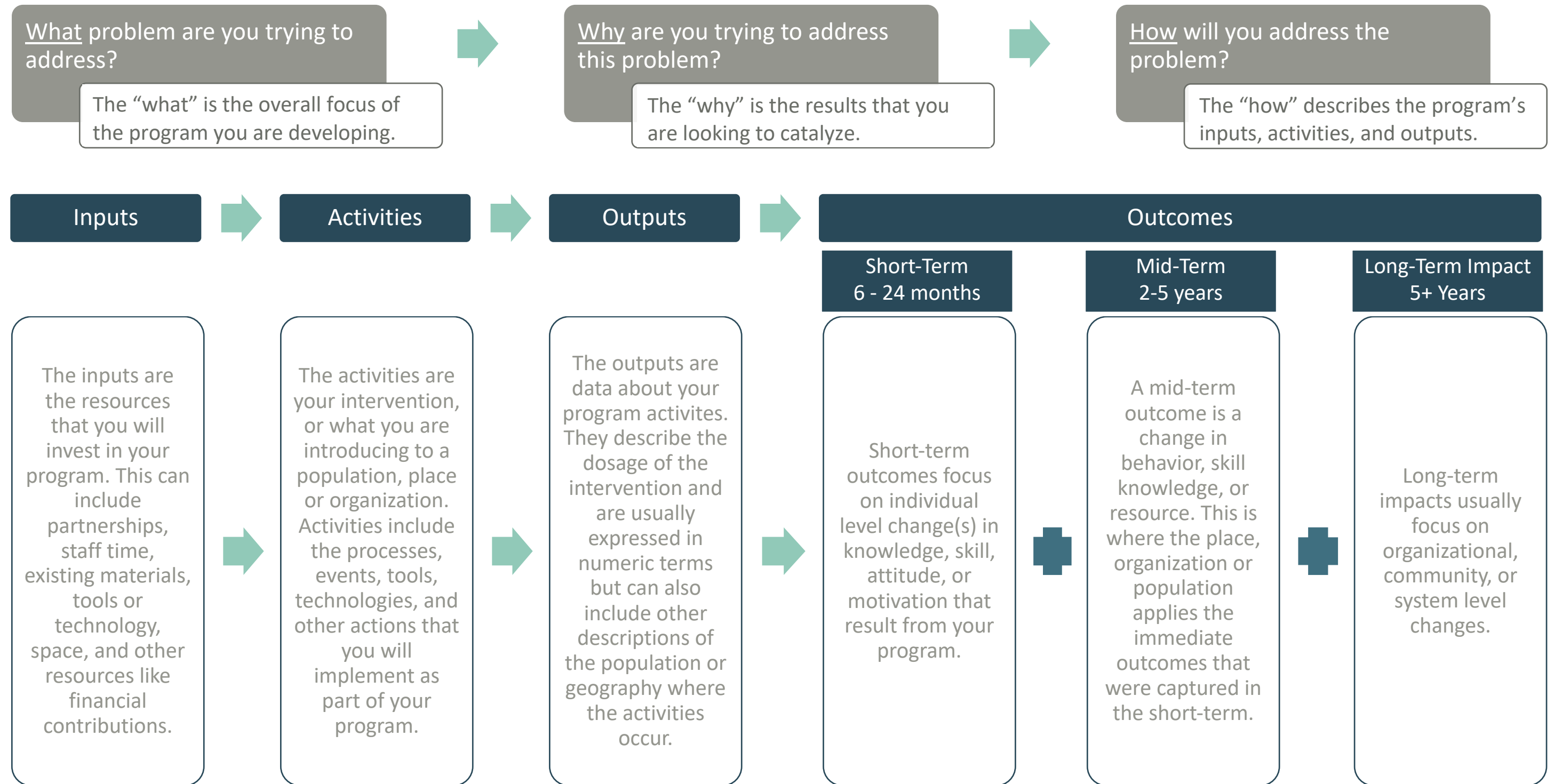


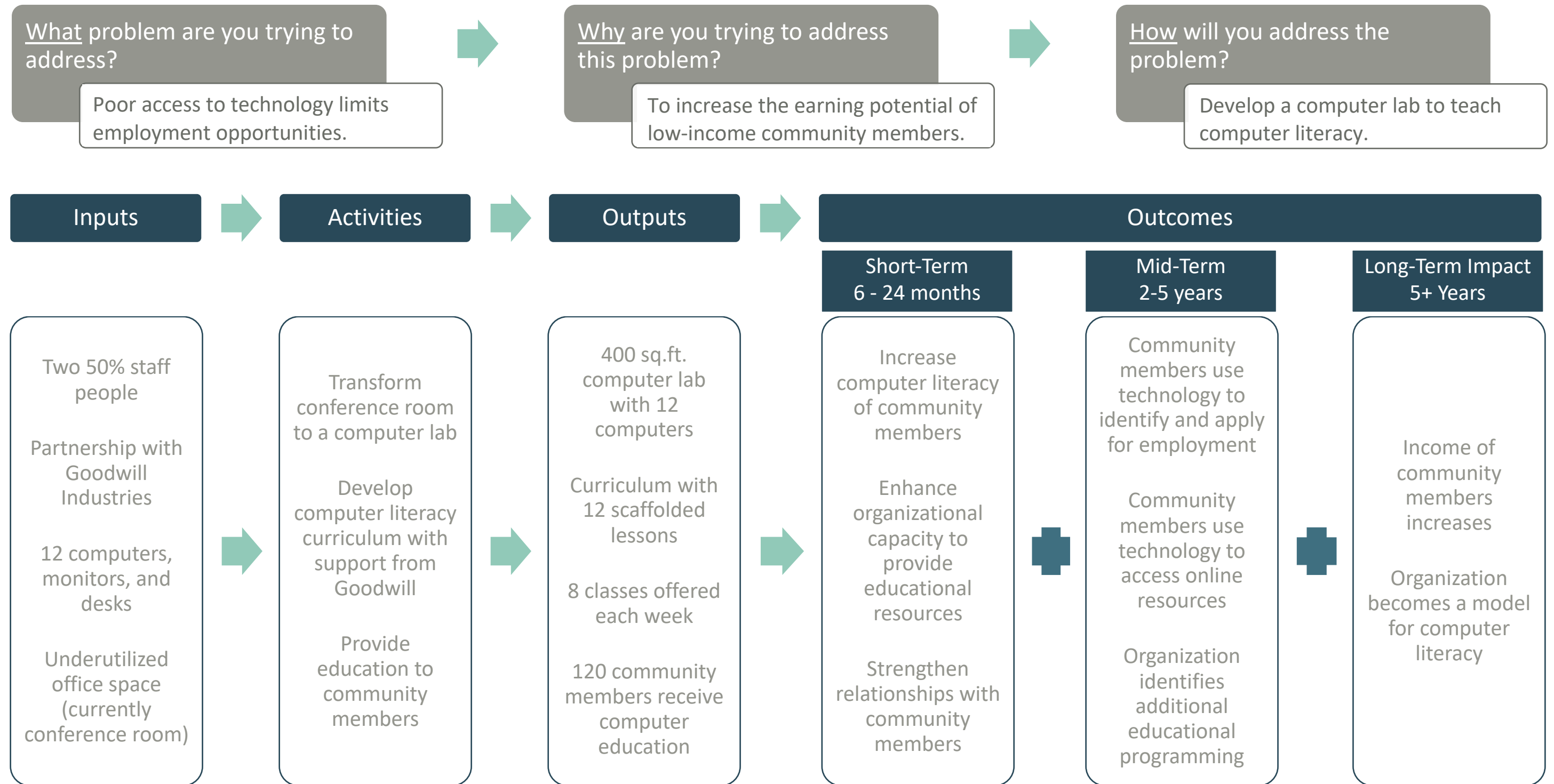
## Logic Model Template

A logic model is a road map that visually describes the logical relationships between the program elements, in other words, how you get from the current state to a new desired state. It visually expresses the relationship between a program's inputs and the program's outputs. By developing a logic model during the early stages of program planning, you set your program up for success. It is best to apply a backwards design approach and begin with the result you are trying to achieve.



## Logic Model Template

A logic model is a road map that visually describes the logical relationships between the program elements, in other words, how you get from the current state to a new desired state. It visually expresses the relationship between a program's inputs and the program's outputs. By developing a logic model during the early stages of program planning, you set your program up for success. It is best to apply a backwards design approach and begin with the result you are trying to achieve.



## Logic Model Template

A logic model is a road map that visually describes the logical relationships between the program elements, in other words, how you get from the current state to a new desired state. It visually expresses the relationship between a program's inputs and the program's outputs. By developing a logic model during the early stages of program planning, you set your program up for success. It is best to apply a backwards design approach and begin with the result you are trying to achieve.

